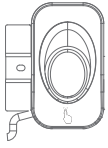


CYPRUS/STII/CT15M/CT18M: Quick Install Guide

Packing Contents



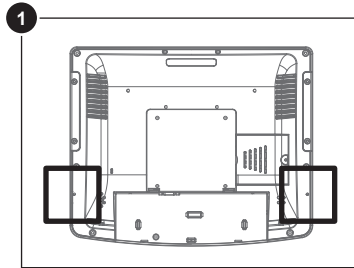
1 X Fingerprint Reader
(4GB-F02-R)

1 X M3x9mm screw

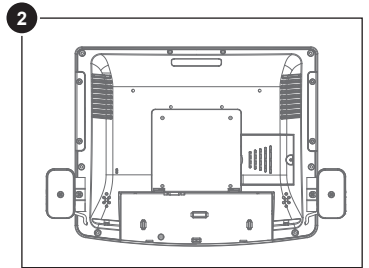
1 X Quick Install Guide

Installation

Fingerprint reader can be left mounted or right mounted.

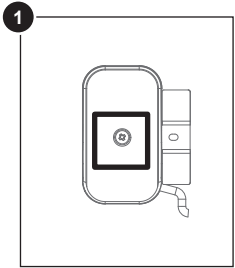


1 Locate mounting hole on back of machine.

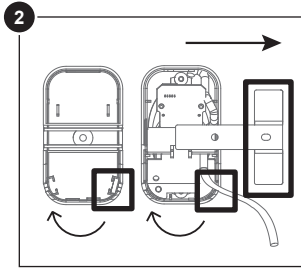


2 Secure reader to machine with included screw, either on left or right side.

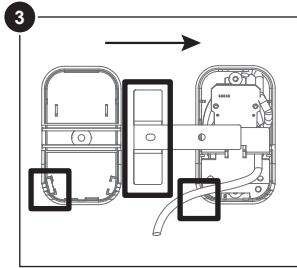
Changing right mount to left mount setup.



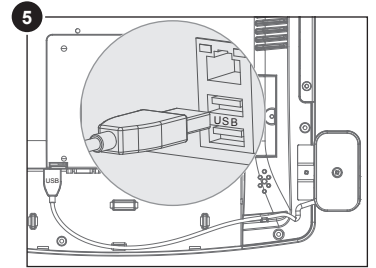
1 Remove locking screw and open the cover.



2 Move bracket, cable and rubber to the other side then close the cover.



3 Secure bracket with previously removed screws.

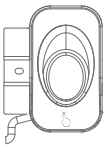


4 Connect USB A cable to IO port to complete installation.

MF-PUB-010 (ver. A2)

CYPRUS/STII/CT15M/CT18M: Quick Install Guide

Packing Contents



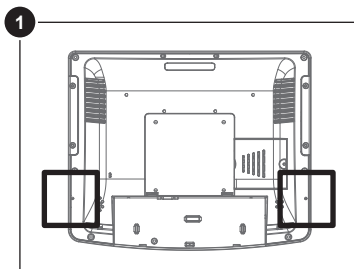
1 X Fingerprint Reader
(4GB-F02-R)

1 X M3x9mm screw

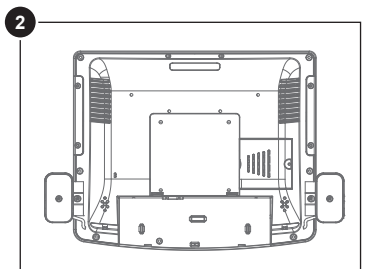
1 X Quick Install Guide

Installation

Fingerprint reader can be left mounted or right mounted.

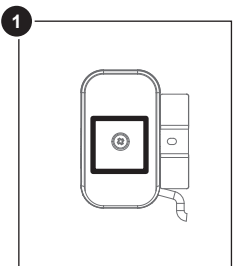


1 Locate mounting hole on back of machine.

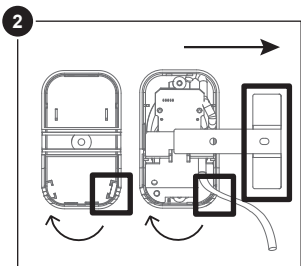


2 Secure reader to machine with included screw, either on left or right side.

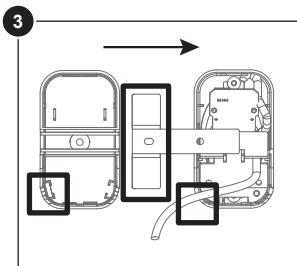
Changing right mount to left mount setup.



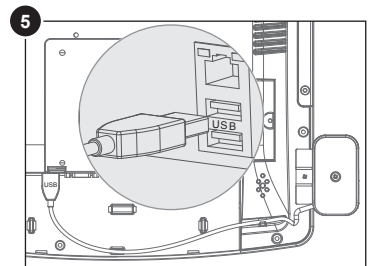
1 Remove locking screw and open the cover.



2 Move bracket, cable and rubber to the other side then close the cover.



3 Secure bracket with previously removed screws.



4 Connect USB A cable to IO port to complete installation.

MF-PUB-010 (ver. A2)